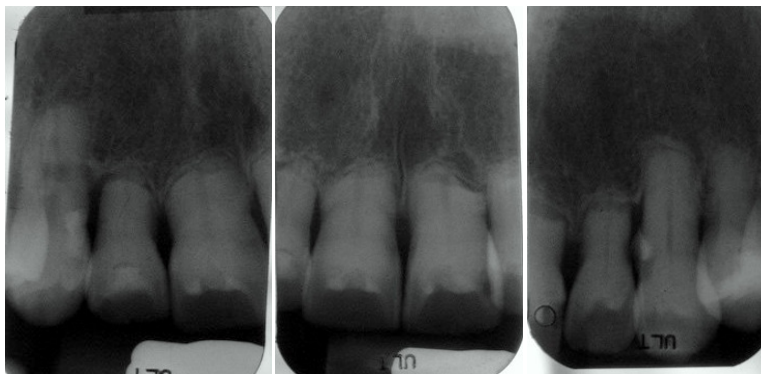


Management the Debilitated Dentition

Vincent Kokich February 27, 2008

Dr. Kokich spent significant time discussing the etiology and treatment of root resorption. Below are two patients I have recently seen with severe root resorption; the first radiographs show root resorption which the patient had following orthodontic treatment 65 years ago and still was been able to maintain her teeth. The second patient (photo and radiographs) is only fifteen and may require additional orthodontic treatment. Both raise questions regarding their past and future treatment.



Dr. Kokich reviewed several important issues pertaining to root resorption:

1. What percentage of patients have root resorption during orthodontic care?
 - a. *Nearly one hundred percent*
2. What causes root resorption?
 - a. *Hyaline formation in the PDL which prevents bone resorption but leads to root resorption*
3. Why don't we see more patients with root resorption?
 - a. *The root repairs itself in the majority of the cases, up to 8 weeks after force is applied*
4. What percent of patients have severe root resorption?
 - a. *Only 3 % have greater than 20% of the root lost*
5. Is there a genetic tendency for severe root resorption?
 - a. *Yes, genetic factors account for about 50% of all cases*
6. Do greater forces on teeth increase root resorption?
 - a. *No*
7. Which forces are worse intermittent or continuous?
 - a. *Continuous force is more likely to cause resorption due to the lack of time for the root to repair*
8. Does the amount of movement affect root resorption?
 - a. *Yes, resorption is correlated with the amount of distance the apex moves*
9. Does the resorption continue after orthodontics?
 - a. *No*
10. Can you retreat a patient with root resorption?
 - a. *Yes (But With Care)*

We welcome any feedback or questions you may have. I also recommend visiting Dr. Kokich's web site at www.kokichorthodontics.com, or our site DiCesareDDS.com.